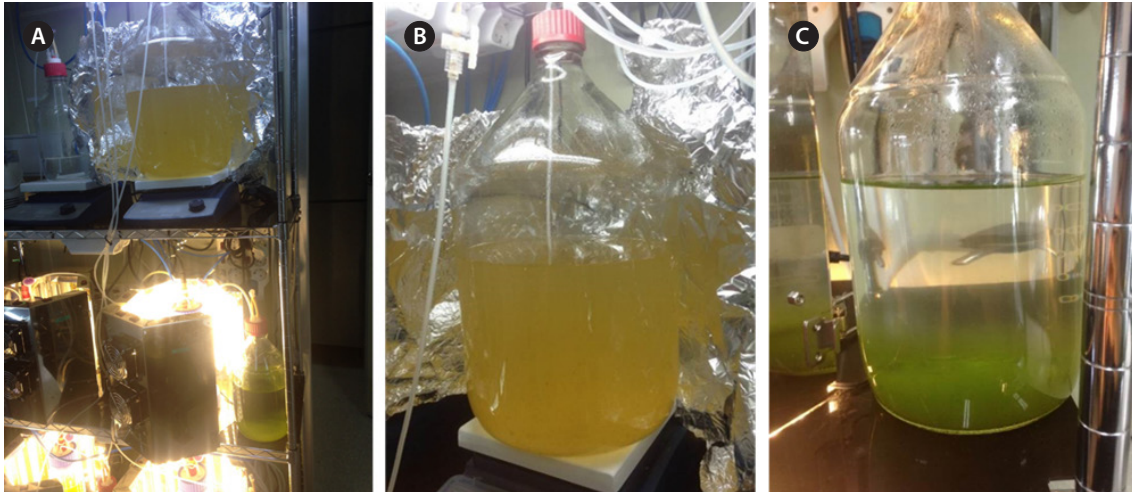


Supplementary Material

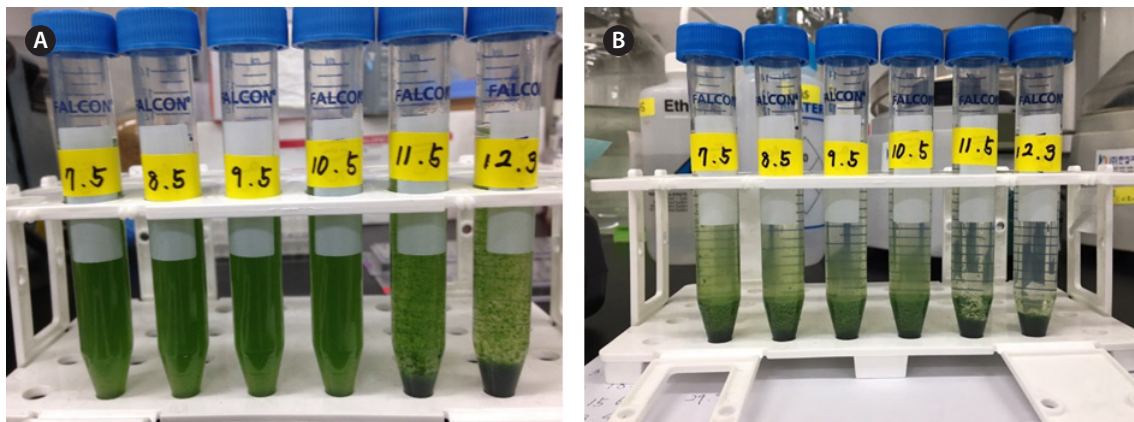
Algae 2018, 33(4): 319-327

<https://doi.org/10.4490/algae.2018.33.12.9>

Open Access



Supplementary Fig. S1. The overall experimental equipment of chemostat cultivation (A), the influent turbid pond water (turbidity 87 nephelometric turbidity unit [NTU]) (B), and the effluent after chemostat culture for 3 days (turbidity 1.37 NTU) (C).



Supplementary Fig. S2. *Ettlia* sp. YC001 flocs after 5 min of pH adjustment (A) and sedimentation of *Ettlia* sp. YC001 flocs after 3 h of pH adjustment (B).