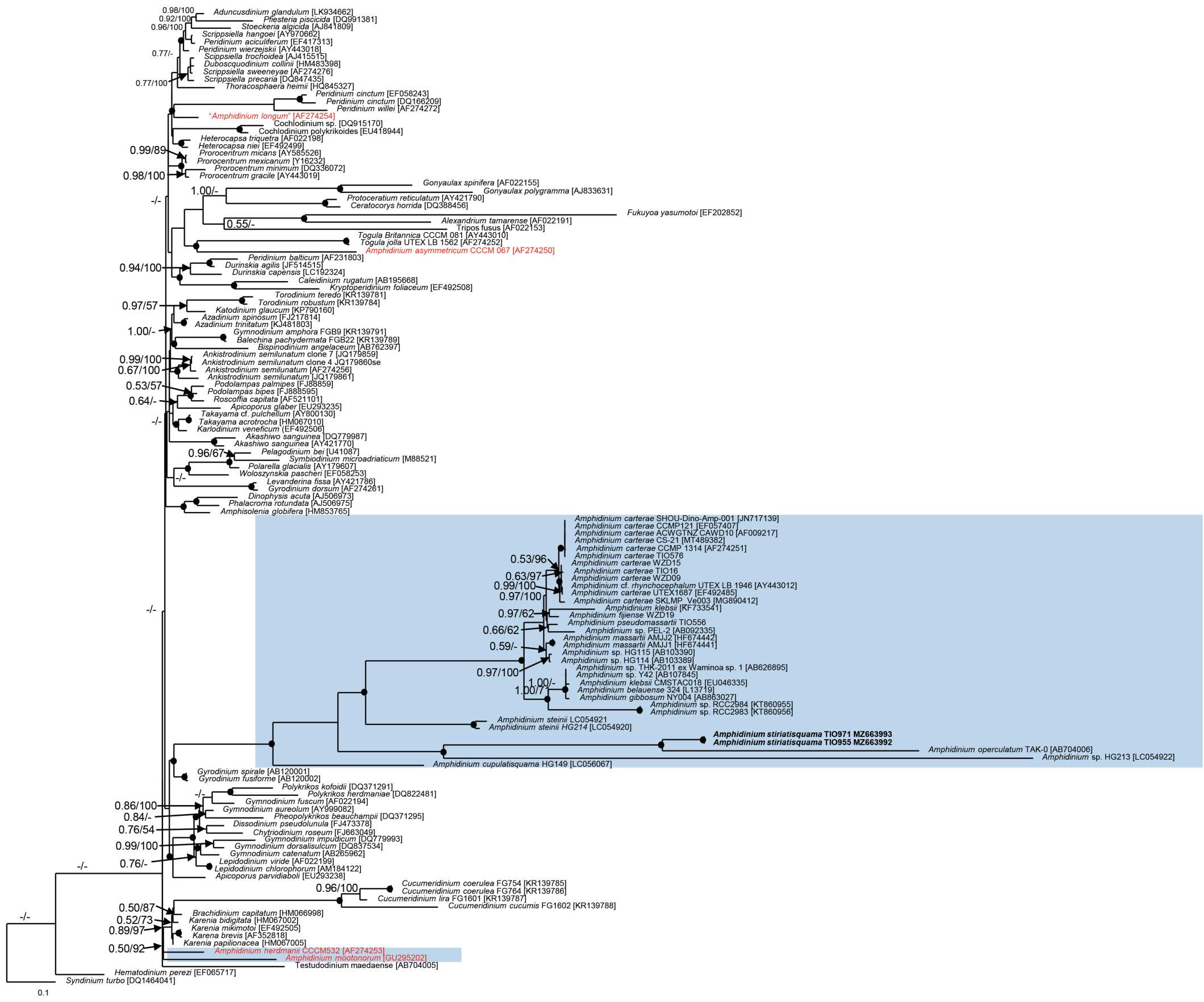


Supplementary Materials

Algae 2021, 36(4): 241-261

<https://doi.org/10.4490/algae.2021.36.8.27>

Open Access



Supplementary Fig. S1. Molecular phylogeny inferred from partial small subunit rRNA sequences using maximum likelihood (ML). *Syndinium turbo* was used as the outgroup. Values at nodes shown the statistical support of the ML bootstrap analysis and Bayesian posterior probabilities (right, ML bootstrap support values; left, Bayesian posterior probabilities); black circles show the maximal support in ML and Bayesian inference (100% and 1.0, respectively). Posterior probabilities >0.5 and bootstrap values >50% are shown.

Supplementary Video S1. *Amphidinium stirisquamtum* sp. nov. strain TIO971 living cells [Available at <http://www.e-algae.org>].