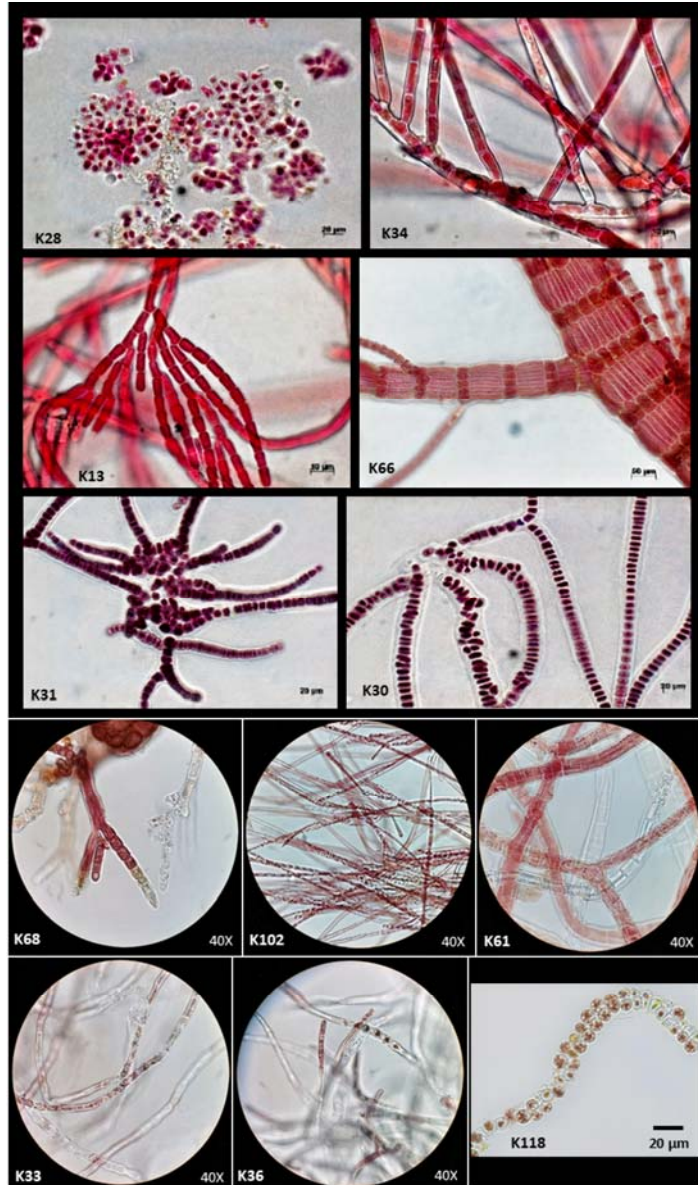


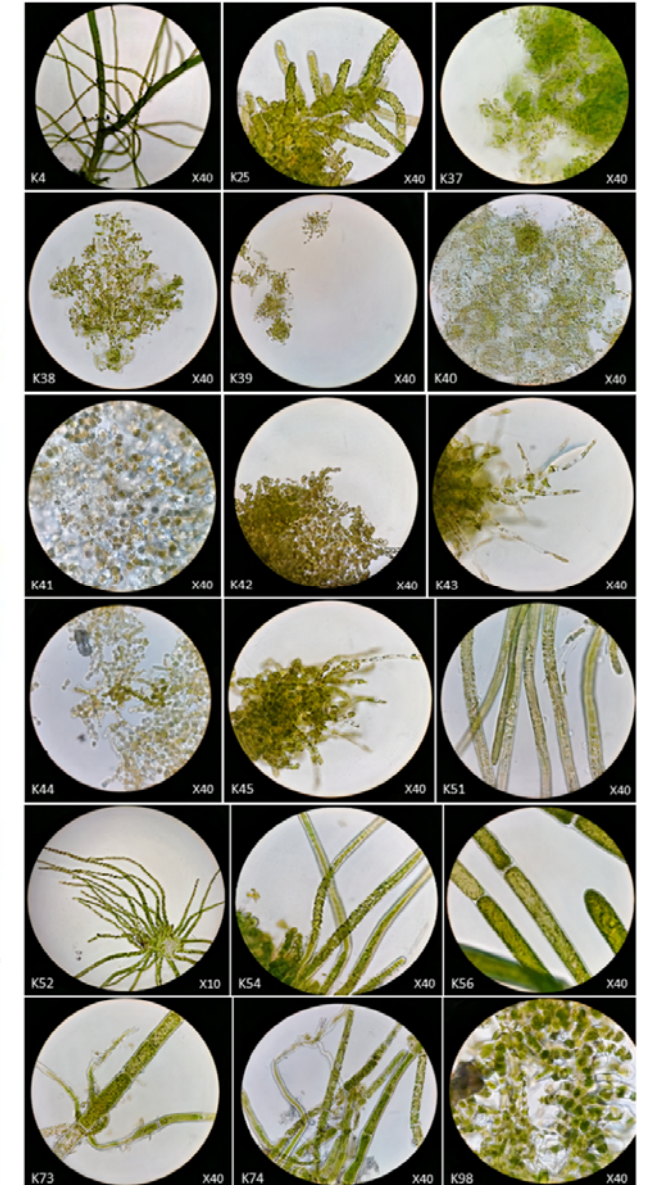
**A** Phaeophyceae



**B** Phaeophyceae isolates



**C** Chlorophyta isolates



**Supplementary Fig. S1.** (A–C) The identification of the species was based upon molecular analyses of *in vitro* algal cultures (under laboratory conditions with specific light : dark time period)—mostly in a microscopic stage and not always similar morphologically to growth in the natural environment.