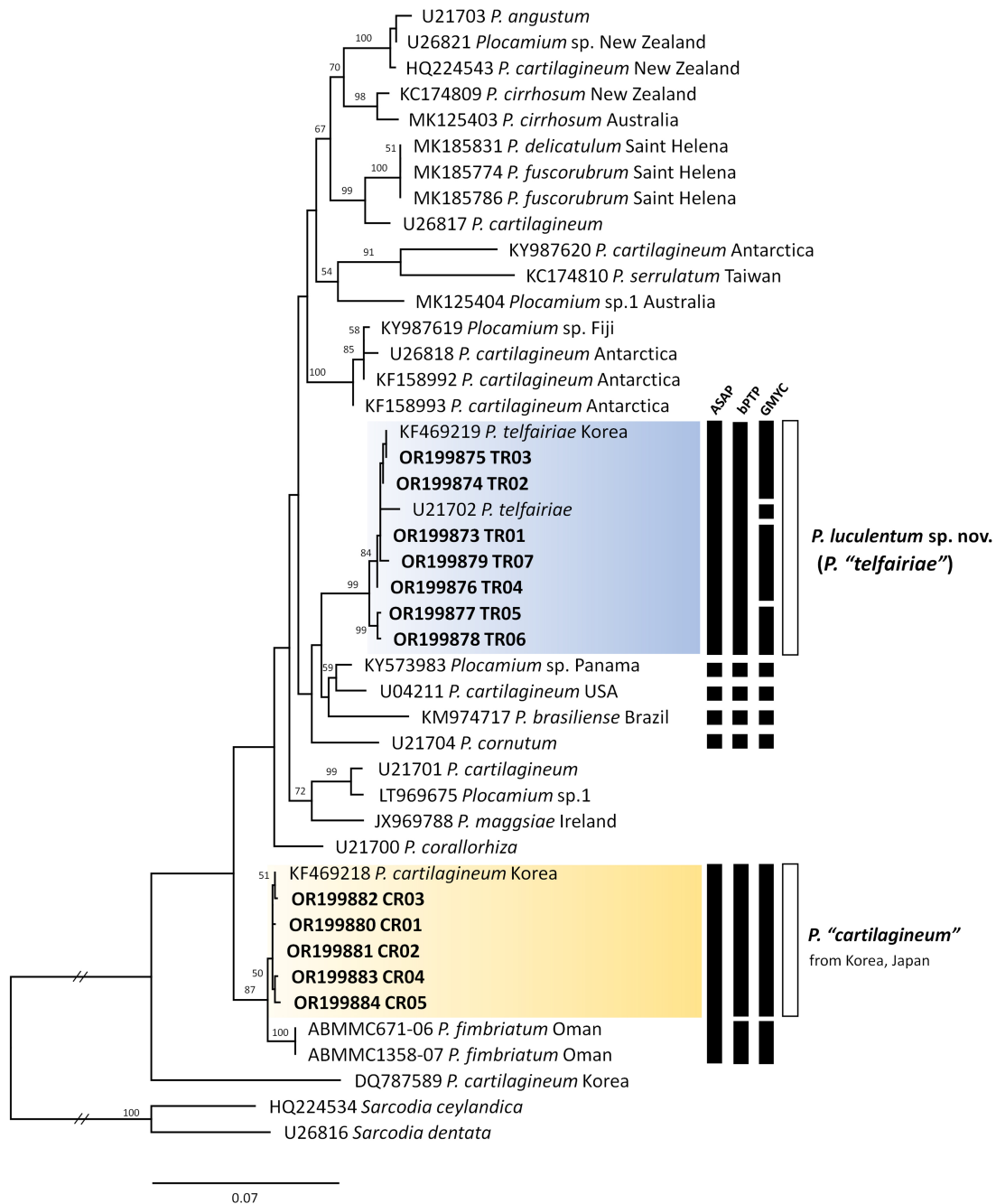


Supplementary Materials

Algae 2023, 38(3): 159-172

<https://doi.org/10.4490/algae.2023.38.8.4>

Open Access



Supplementary Fig. S1. Maximum likelihood phylogenetic tree of the genus *Plocamium* with species delimitation result from ASAP, bPTP, and GMYC based on the *rbcL* gene. Sequences inside the blue box indicate *Plocamium luculentum* sp. nov. and yellow box indicate *P. "cartilagineum"* from the Northwest Pacific. Distinct haplotypes sequences in this study are presented in bold. ASAP, Assemble Species by Automatic Partitioning; bPTP, Poisson Tree Process; GMYC, generalized mixed Yule-coalescent.